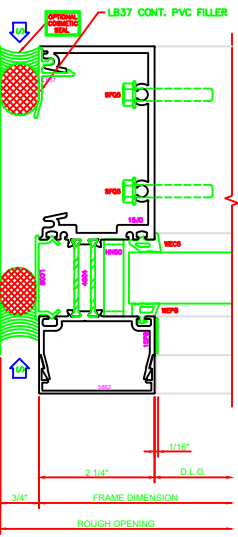
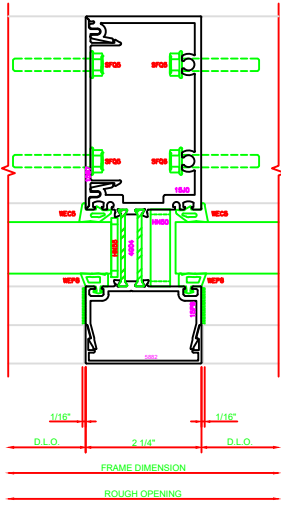


ERASE NOTE
 NOTE: WHEN USING TUBULAR HORIZONTAL COVER THE 1/4" GAP SHOWN IS USED. WHEN USING THE 2-PIECE HORIZONTAL COVER/PRESSURE PLATE, THE COVER WILL HAVE A 3/8" GAP AND PRESSURE PLATE WILL HAVE 3/8" GAP ON EACH END. ADJUST ACCORDINGLY.

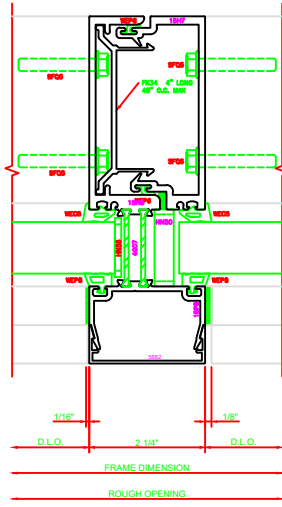
412 I.G. JAMB
 SERIES: 5500 6"



614 I.G. VERT.
 SERIES: 5500 6"



615 I.G. EXPANSION VERT.
 SERIES: 5500 6"



ERASE NOTE
 NOTE: WHEN USING TUBULAR HORIZONTAL COVER THE 3/8" GAP SHOWN IS USED. WHEN USING THE 2-PIECE HORIZONTAL COVER/PRESSURE PLATE, THE COVER WILL HAVE A 3/8" GAP AND PRESSURE PLATE WILL HAVE 3/8" GAP ON EACH END. ADJUST ACCORDINGLY.

413 I.G. JAMB
 SERIES: 5500 6"

